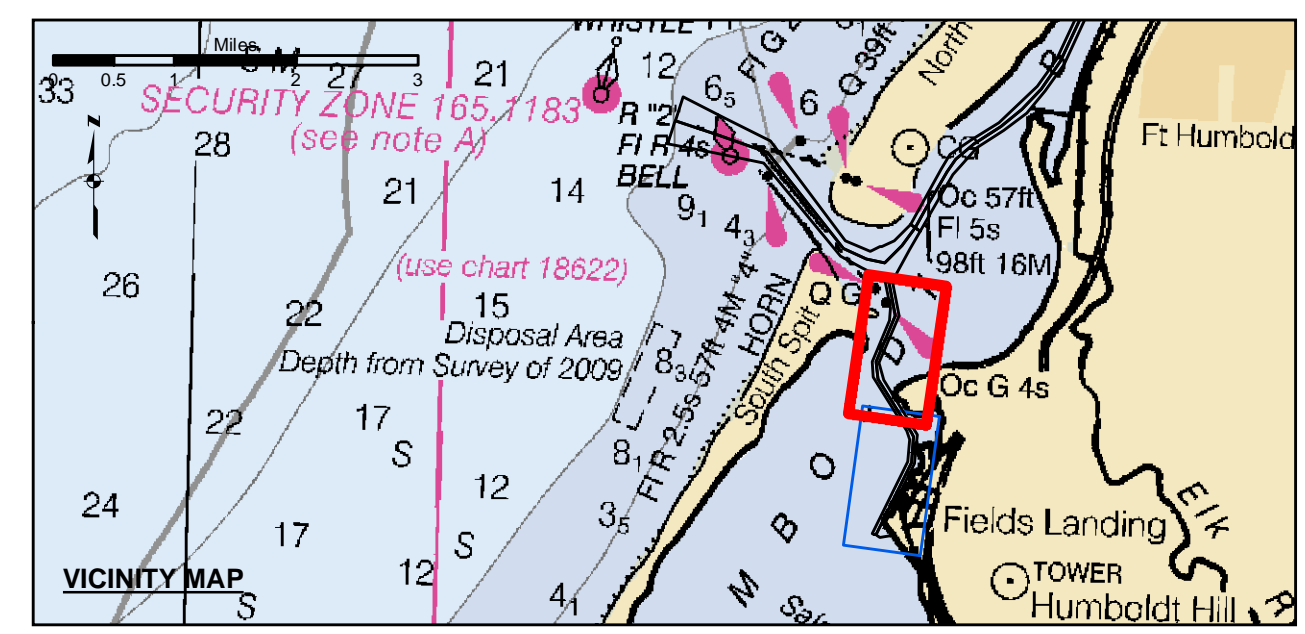


US Army Corps of Engineers
 San Francisco District
 450 Golden Gate Ave
 San Francisco, CA 94102

DISCLAIMER
 The United States Government furnishes this information as a public service. It is not intended to be used for any purpose other than the intended purpose. The user is responsible for the results of any application of the data for other than the intended purpose. The United States Government makes no warranty, expressed or implied, concerning the accuracy, completeness, or timeliness of the information furnished. The United States Government shall not be liable for any damages, including any consequential damages, arising from the use of the information furnished. These data belong to the Government. Therefore, the recipient may not transfer these data to others without also transferring this Disclaimer.

Chart Date:	Mar 30, 2022
Surveyed By:	KEVIN P. ARNETT
Plotted By:	PDT
Checked By:	PDT
Drawn By:	PDT

Angle Point	Easting	Northing
02D	594565.39	2164019.93
03D	594557.09	2163480.73
04D	5944815.19	2161685.73
05D	5944649.69	2161026.63
06D	5946320.29	2158673.13
07D	5946443.69	2158296.73
08D	5946373.29	2157338.43
09D	5944832.09	2154225.03
10D	5945142.49	2154071.33
11D	5945640.09	2154120.63
12D	5945716.69	2154275.33
13D	5945411.89	2154719.93
14D	5946668.09	2157257.93
15D	5946761.99	2158532.43
16D	5945301.39	2160869.63
17D	5945118.39	2161632.23
18D	5945982.89	2163668.93
D2	5945826.59	2163684.63
D3	5944966.79	2161658.93
D4	5945075.59	2160948.23
D5	5945451.09	2159602.63
D6	5946002.79	2159414.13
D7	594520.89	2157298.13
D8	5944966.49	2154158.45



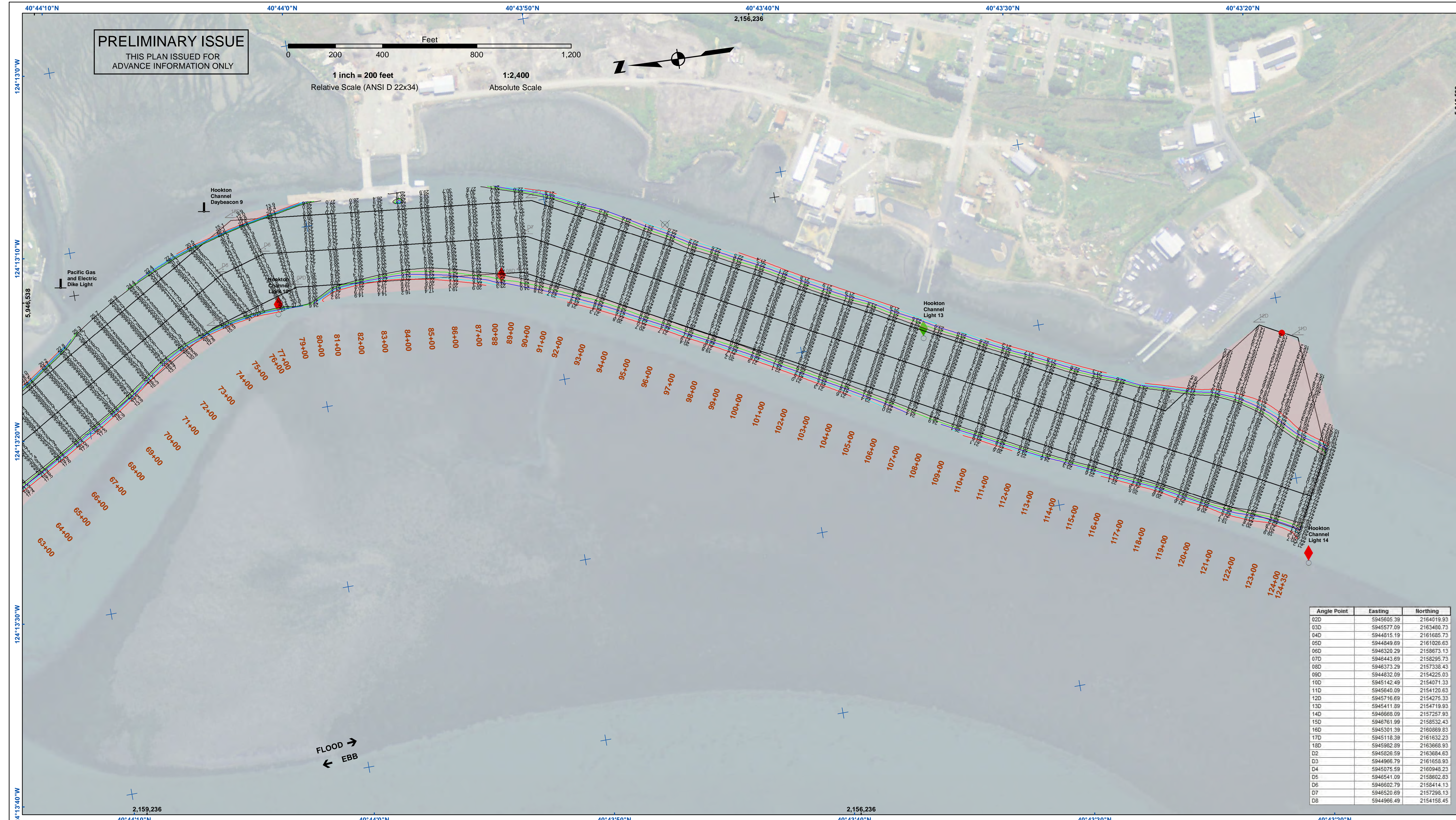
- Federal Navigation Channel
 - Shoaling Area
 - Placement Area
 - Anchorage Area
 - Wreck Area
 - Submerged Wreck
 - Angle Point
 - Beacon, General
 - Obstruction Point
 - Navigation Buoy
 - Navigation Buoy
 - Shoalest Sounding*
- Contours**
- 26
 - 25
 - 24
 - 23
 - 22

NOTES:
 DRAWINGS NOT TO BE USED AS NAVIGATION. ONLY CHANNEL CONDITION AT DATE OF SURVEY. THE LOCATION OF ALL NAVIGATION AIDS ARE BASED ON INFORMATION PROVIDED BY THE U.S. COAST GUARD. BUOY LOCATION REPRESENT THE POSITION OF THE SINKER ONLY.
 SURVEYED BY THE CORPS OF ENGINEERS.
 SOUNDINGS WERE TAKEN BY FATHOMETER AND ARE SHOWN TO THE NEAREST TENTHS OF A FOOT.
 SOUNDINGS ARE BASED ON THE DATUM OF MEAN LOWER LOW WATER AT THE LOCALITY.

PROJECT DEPTHS ARE AS FOLLOWS:
 BAR & ENTRANCE CHANNEL = 48 FEET
 NORTH BAY, SAMOA TO MILE 5.0 & = 38 FEET
 EUREKA CHANNEL, FIELDS LANDING CHANNEL & MILE 5.0 TO "N" STREET = 26 FEET
 SOUNDINGS ARE BASED ON TIDE GAUGES REFERENCED TO U.S.C. & G.S.
 BENCH MARKS AS FOLLOWS:
 EUREKA & SOMA CHANNELS - B.M. NO. 4 (1906) ELEV. 33.61' M.L.L.W.
 ENTRANCE & NORTH BAY CHANNELS - B.M. NO. 9 (1937) ELEV. 16.35' M.L.L.W.
 FIELDS LANDING CHANNEL - B.M. NO. 5 (1925) ELEV. 8.52' M.L.L.W.

CALIFORNIA
 HUMBOLDT COUNTY
**HUMBOLDT BAY
 FIELDS LANDING CHANNEL
 CONDITION SURVEY
 23-26 MARCH 2022**

**Sheet
 Reference
 Number
 1 of 2**



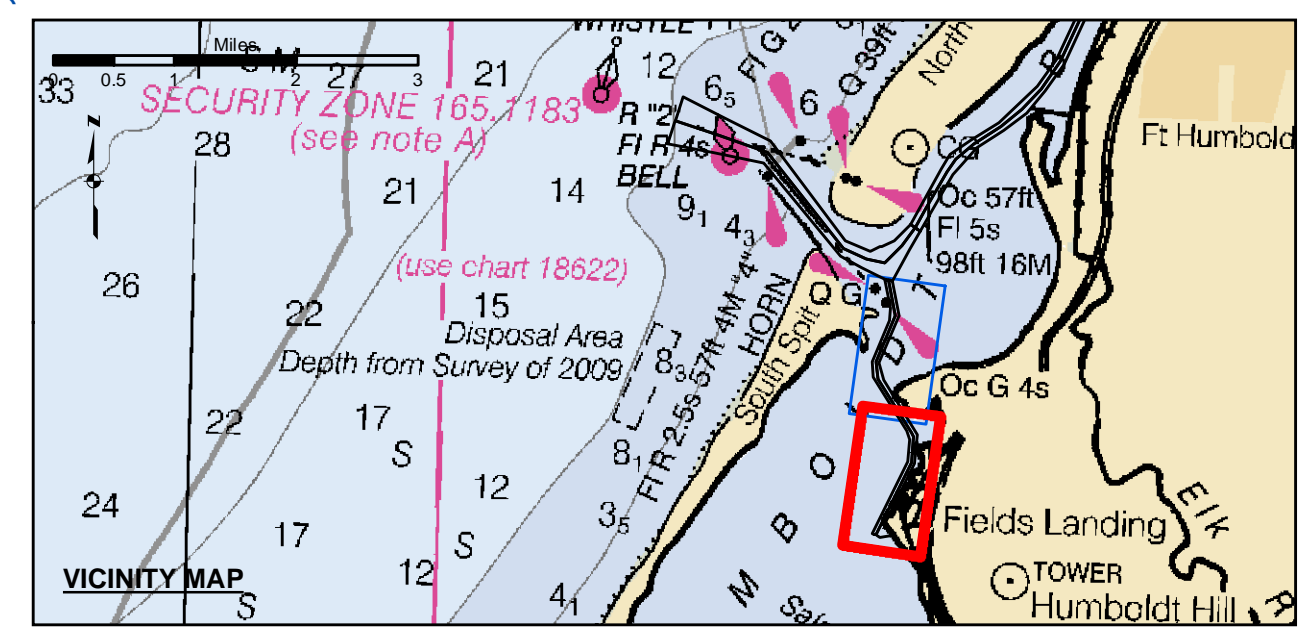
US Army Corps of Engineers
 San Francisco District
 450 Golden Gate Ave
 San Francisco, CA 94102

DISCLAIMER
 The United States Government furnishes this information as a public service. It is not intended to be used for any purpose other than the intended purpose. The user is responsible for the results of any application of the data for other than the intended purpose. The user is responsible for the results of any application of the data for other than the intended purpose. The user is responsible for the results of any application of the data for other than the intended purpose.

Chart Date:	Mar 30, 2022
Designed by:	PDT
Plotted by:	PDT
Checked by:	PDT
Drawn by:	PDT

CALIFORNIA
 HUMBOLDT COUNTY
 HUMBOLDT BAY
 FIELDS LANDING CHANNEL
 CONDITION SURVEY
 23-26 MARCH 2022

Angle Point	Easting	Northing
02D	5945685.39	2164019.93
03D	5945577.09	2163480.73
04D	5944815.19	2161685.73
05D	5944649.69	2161026.63
06D	5946320.29	2158873.13
07D	5946443.69	2158296.73
08D	5946373.29	2157338.43
09D	5944832.09	2154225.03
10D	5945142.49	2154071.33
11D	5945640.09	2154120.63
12D	5945716.69	2154275.33
13D	5945411.89	2154719.93
14D	5946668.09	2157257.93
15D	5946761.99	2158532.43
16D	5945301.39	2160869.83
17D	5945118.39	2161632.23
18D	5945982.89	2163668.93
D2	5945826.59	2163684.63
D3	5944966.79	2161658.93
D4	5945075.59	2160948.23
D5	5945441.09	2159602.63
D6	5946602.79	2158414.13
D7	5945200.89	2157298.13
D8	5944966.49	2154158.45



- Federal Navigation Channel
 - Shoaling Area
 - Placement Area
 - Anchorage Area
 - Wreck Area
 - Submerged Wreck
 - Angle Point
 - Beacon, General
 - Obstruction Point
 - Navigation Buoy
 - Navigation Buoy
 - Shoalest Sounding*
- Contours**
- 26
 - 25
 - 24
 - 23
 - 22

NOTES:
 DRAWINGS NOT TO BE USED AS NAVIGATION. ONLY CHANNEL CONDITION AT DATE OF SURVEY. THE LOCATION OF ALL NAVIGATION AIDS ARE BASED ON INFORMATION PROVIDED BY THE U.S. COAST GUARD. BUOY LOCATION REPRESENT THE POSITION OF THE SINKER ONLY.
 SURVEYED BY THE CORPS OF ENGINEERS.
 SOUNDINGS WERE TAKEN BY FATHOMETER AND ARE SHOWN TO THE NEAREST TENTHS OF A FOOT.
 SOUNDINGS ARE BASED ON THE DATUM OF MEAN LOWER LOW WATER AT THE LOCALITY.
 PLANE GRID AND COORDINATES ARE BASED ON THE STATE OF CALIFORNIA COORDINATE SYSTEM, LAMBERT CONFORMAL PROJECTION, ZONE 1 NAD 83, CALIFORNIA, AS DESCRIBED IN SPECIAL PUBLICATION NO. 235, PUBLISHED BY THE NATIONAL OCEAN SURVEY.

PROJECT DEPTHS ARE AS FOLLOWS:
 BAR & ENTRANCE CHANNELS = 48 FEET
 NORTH BAY, SAMOA TO MILE 5.0 & = 38 FEET
 EUREKA CHANNEL, FIELDS LANDING CHANNEL & MILE 5.0 TO "N" STREET = 26 FEET
 SOUNDINGS ARE BASED ON TIDE GAUGES REFERENCED TO U.S.C. & G.S.
 BENCH MARKS AS FOLLOWS:
 EUREKA & SOMA CHANNELS - B.M. NO. 4 (1906) ELEV. 33.61' M.L.L.W.
 ENTRANCE & NORTH BAY CHANNELS - B.M. NO. 9 (1937) ELEV. 16.35' M.L.L.W.
 FIELDS LANDING CHANNEL - B.M. NO. 5 (1925) ELEV. 8.52' M.L.L.W.

Sheet Reference Number
 2 of 2